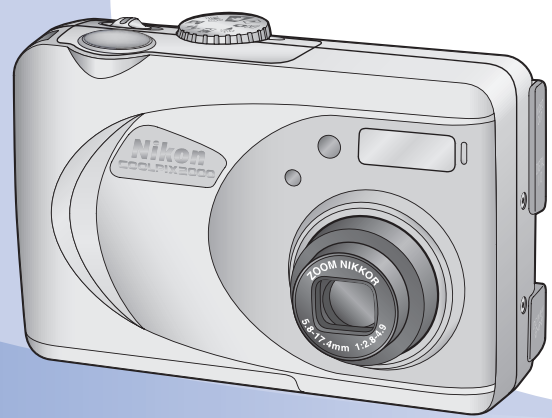


Quick Start Guide

COOLPIX2000

Follow the instructions in this guide to set up your camera, take pictures, and review your pictures in the camera monitor.

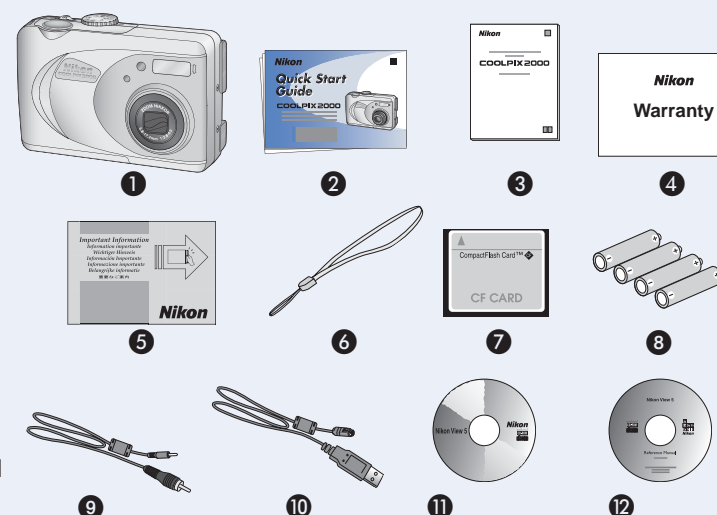


- Step 1: Unpack the camera
- Step 2: Ready the camera
- Step 3: Before taking pictures
- Step 4: Take a picture
- Step 5: Check your pictures

Step 1 Unpack the camera

Be sure all items listed here were included with your camera.

- 1 COOLPIX2000 camera
- 2 Quick Start Guide (This guide)
- 3 Guide to Digital Photography
- 4 Warranty
- 5 Important Information
- 6 Camera strap
- 7 CompactFlash™ memory card
- 8 4 LR6 (AA) alkaline batteries
- 9 Video cable
- 10 USB cable
- 11 Nikon View 5 CD-ROM
- 12 Nikon View 5 Reference Manual CD-ROM

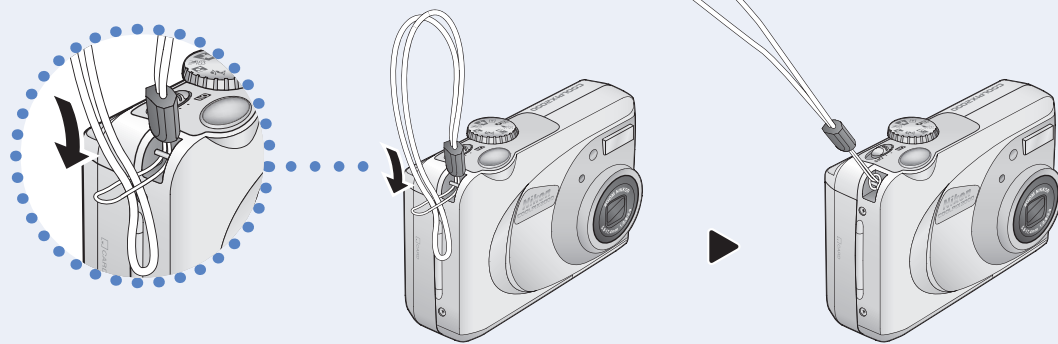


Use Only Nikon Brand Electronic Accessories

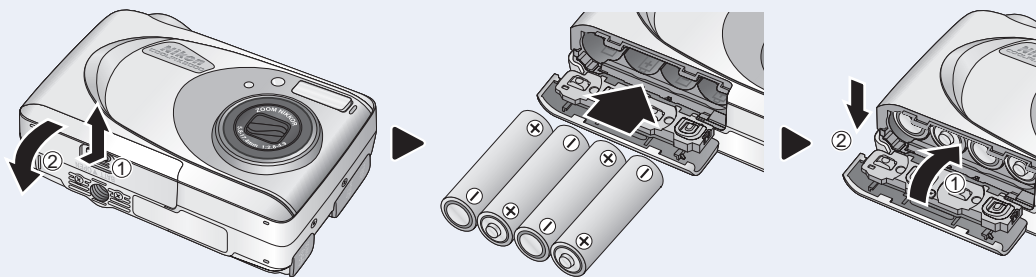
Your Nikon COOLPIX digital camera is designed to the highest standards and includes complex electronic circuitry. Only Nikon brand electronic accessories (including AC adapters) certified by Nikon specifically for use with your Nikon digital camera are engineered and proven to operate within the operational and safety requirements of this electronic circuitry. THE USE OF NON-NIKON ELECTRONIC ACCESSORIES COULD DAMAGE YOUR CAMERA AND MAY VOID YOUR NIKON WARRANTY. For more information about Nikon brand accessories, contact your local authorized Nikon dealer.

Step 2 Ready the camera

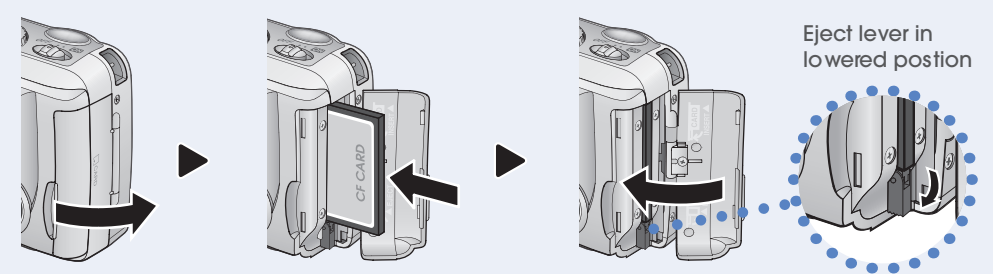
1 Attach the included camera strap as shown.



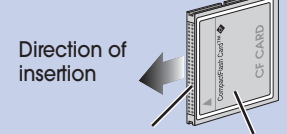
2 Open the battery-chamber cover on the bottom of the camera by pushing in the button on the chamber cover and sliding the cover towards the ▲ mark. Insert the four LR6 (AA) alkaline batteries as shown in the illustration below, then close the cover. While holding the cover closed, return it to the locked position.



3 Open the card-slot cover on the side of the camera, and insert the included memory card. Slide the memory card all the way into the slot until it stops. Make sure the card is secure and the eject lever has been lowered, then close the card-slot cover.



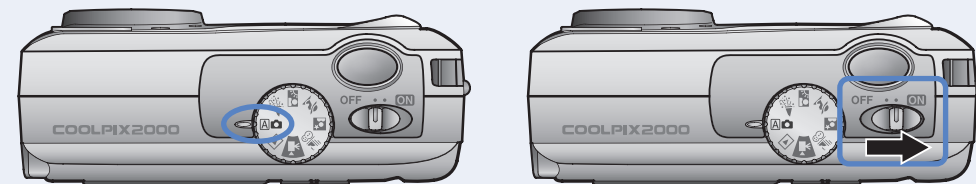
Insert the memory card with the CompactFlash™ label facing the rear of the camera (the side with the monitor). Make sure to insert the edge with the terminals (two rows of small holes) into the camera.



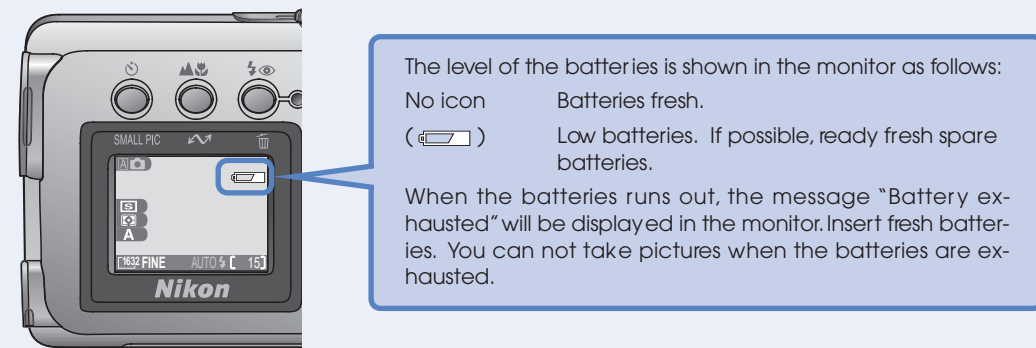
The memory card provided with your camera is formatted at shipment. Other memory cards must however be formatted before first use. See the *Guide to Digital Photography*, page 75.

Step 3 Before taking pictures

1 Check that the mode dial is set to . Then slide the power switch in the direction of the arrow to turn the camera on.



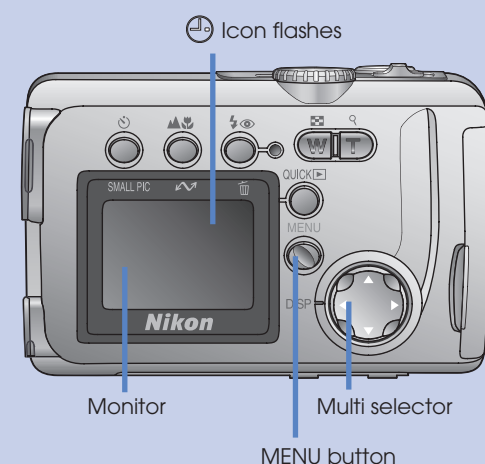
2 Check indicators in the camera monitor.



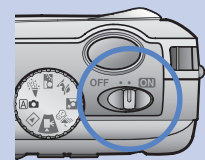
Set the time and date

Setting the current date and time allows date and time information to be recorded with your pictures. When you first use your camera the icon in the monitor will flash indicating that the date and time are not set.

Follow the steps below to set the date and time.



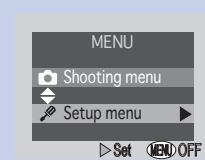
1 Turn the camera on.



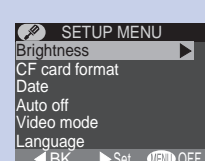
2 Press the MENU button.



3 Press the multi selector down (▼) and select Setup menu.



4 Press ▶.



5 Press ▼ twice to select Date.



6 Press ▶.



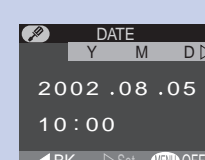
7 Press ▲ or ▼ to set the current year.



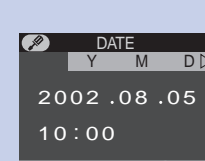
8 Press ▶.



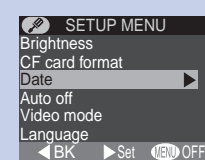
9 Press ▶.



10 Press ▲ or ▼ to select Y:M:D, M:D:Y or D:M:Y.



11 Press ▶.



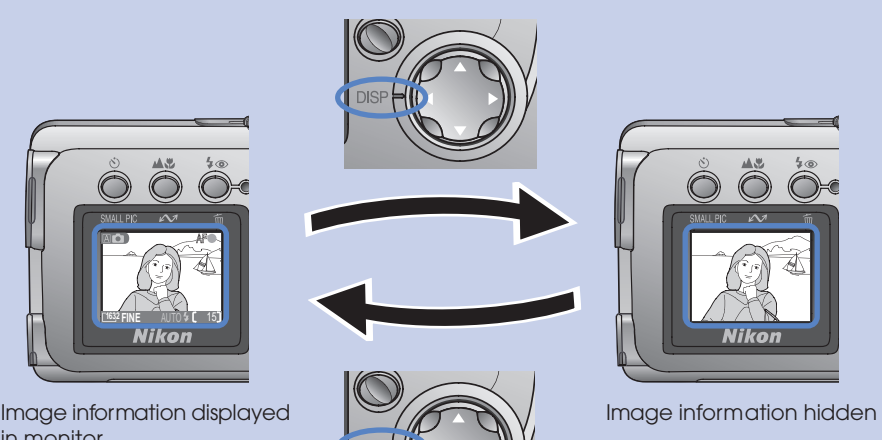
You have now set the current date and time. The monitor will return to the screen displayed in step 5. Press the MENU button to end menu operation and display the view through the lens in the monitor.

Auto power off (See Guide to Digital Photography, pg. 76)

The camera will turn off automatically if the camera controls are not operated for one minute (default setting) to prolong the life of the battery. To turn the camera back on, slide the power switch to the OFF position, then slide it to the ON position again.

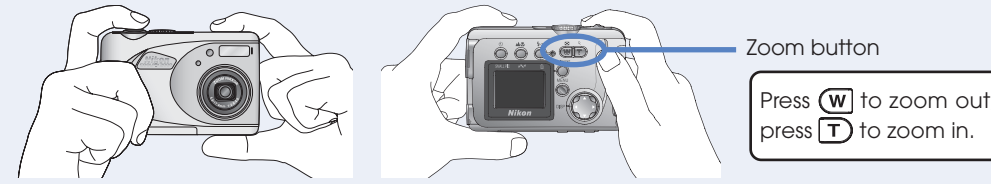
Information display

Press the multi selector to the left (◀) to turn the display of image information in the monitor on and off.



Step 4 Take a picture

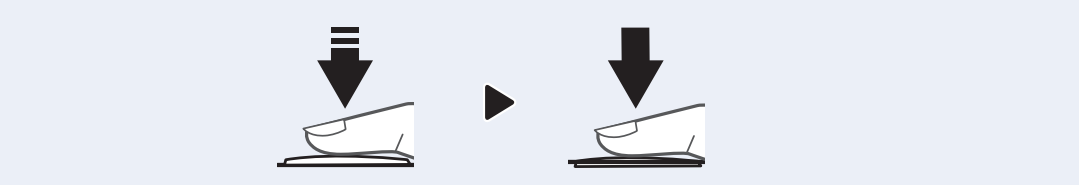
1 Frame your picture in the monitor. Always hold the camera steady with both hand to prevent camera shake.



2 Press the shutter-release button halfway down and confirm that the subject is in focus.



3 Press the shutter-release button all the way down to take a picture.

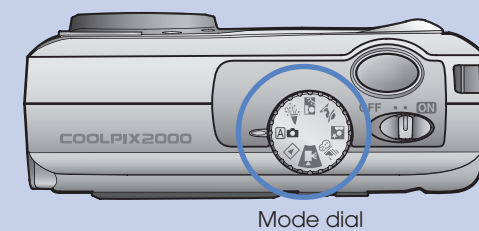


Getting Creative - Choosing a mode (See Guide to Digital Photography, page 25)

In addition to (auto) mode, your camera offers a choice of five scene modes for common compositions (still images only), and a movie mode.

When a scene mode is selected, the camera automatically chooses a combination of settings that match the current scene, so that you do not have to adjust the camera settings one by one.

Use the mode dial to select scene modes and movie mode.



Party/Indoor

Use for shots that include details of the background behind the main subject, or to capture the effects of candlelight and other indoor background lighting.

Back Light

Use when light is coming from behind your subject; the flash will fire automatically to "fill in" (illuminate) the subject's features, which would otherwise be in shadow.

Portrait

Use for portraits. Main subject stands out clearly while background details are softened, lending the composition a sense of depth.

Night Portrait

Use when shooting portraits against a backdrop of night scenery.

Beach/Snow

Vividly captures the brightness of such subjects as snowfields, beaches, or sunlit expanses of water.

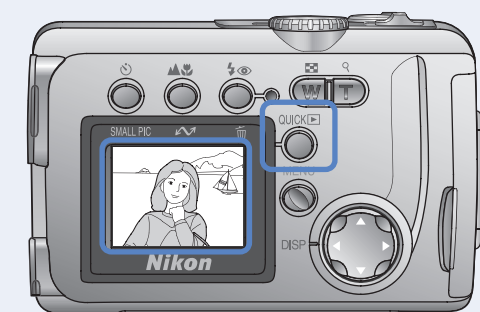
Movie

Movie mode can be used to record silent movies of up to 20 seconds in length. Recording begins when the shutter-release button is pressed all the way down and ends when the shutter-release button is fully pressed a second time. The recording will end automatically when 20 seconds have passed, or earlier if the memory card becomes full.

Step 5 Check your pictures

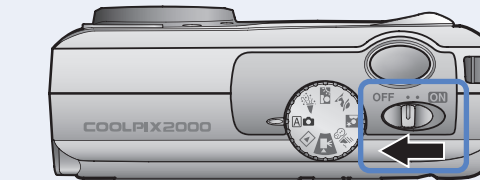
1 Press the QUICK REVIEW button to display your most recent picture in the monitor.

Your camera is also equipped with a full-frame playback mode. See the *Guide to Digital Photography* (page 45) for more details.



Press ▼ (▲) to cycle through your pictures in the order you took them (or in reverse order). Press the shutter release button halfway down to exit quick review and display the view through the lens in the monitor.

2 After you have finished with your camera, slide the power switch in the direction of the arrow to turn the camera off. Our review of the basic operation of the COOLPIX2000 is now complete.



If you want to use a computer to view the pictures that you have taken, see the reverse side of this Quick Start Guide. Refer to the *Guide to Digital Photography* for full operating instructions, allowing you to make the most of all your camera's features.

Menu Guide

The COOLPIX2000 contains three menus which are outlined briefly below. For details on all the menu options, see the *Guide to Digital Photography*, page 53.

Shooting Menu

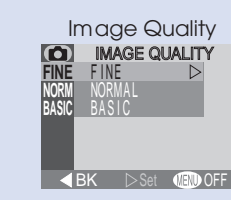
1 Turn the mode dial to and press the MENU button.



2 A choice of menus will be displayed in the monitor. Press ▶ to display the shooting menu.



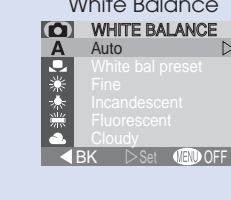
SHOOTING MENU There are 8 options in the shooting menu.
 Image quality: Press ▼ or ▲ down to highlight menu options. Press ▼ to scroll the menu and display all options.
 Image size: Press ▼ or ▲ down to highlight menu options. Press ▼ to scroll the menu and display all options.
 White balance: Press ▼ or ▲ down to highlight menu options. Press ▼ to scroll the menu and display all options.
 Metering: Press ▼ or ▲ down to highlight menu options. Press ▼ to scroll the menu and display all options.
 Best shot selector: Press ▼ or ▲ down to highlight menu options. Press ▼ to scroll the menu and display all options.
 Best shot selector: Press ▼ or ▲ down to highlight menu options. Press ▼ to scroll the menu and display all options.



Choose one of three image quality levels when saving pictures to the memory card.



Pictures can be recorded in any one of three sizes. Choose a larger size for more detail, choose a smaller size to fit more pictures on the memory card.



White Balance keeps colors true regardless of the color of the light source. Choose from one of 7 settings.

Metering Select the areas of the frame in which the camera measures light to determine exposure.
 Matrix
 Spot
 Center-weighted
 Off

Continuous Select whether one picture or a sequence of pictures is taken each time the shutter-release button is pressed.
 Single
 Continuous
 Multi-Shot 12

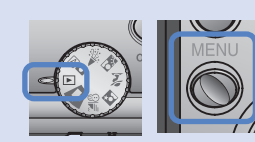
BSS (best shot selector) BSS takes a series of pictures and automatically records the one with the most detail, helping to prevent the recording of blurred pictures.
 On
 Off

Exposure Compensation Adjusts the exposure value automatically selected by the camera. Useful for very bright, very dark or high contrast subjects. There are 6 settings.
 EXP +/-
 0.0
 -0.5
 -1.0
 +0.5
 +1.0

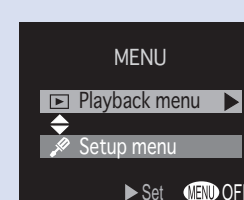
Image Sharpening Select how sharp you want the outlines in your pictures to appear. There are 4 levels to choose from.
 Auto
 High
 Normal
 Low
 Off

Playback Menu

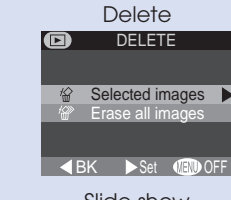
1 Turn the mode dial to and press the MENU button.



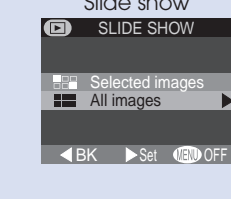
2 A choice of menus will be displayed in the monitor. Press ▶ to display the playback menu.



PLAYBACK MENU There are 5 options in the playback menu.
 Details
 Slide show
 Protect
 Print set
 Auto transfer



Use this option to delete selected images, or to delete all images.



Use this option to play pictures back one after the other in an automated "slide show."

Protect Use this option to prevent pictures you want from being deleted accidentally. Protected images are marked with a icon.
 Protect
 Off

Print Set Create a "print set" that allows you to print pictures directly from the memory card by inserting the card in a compatible printer.
 Print
 Off

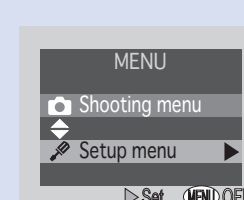
Auto Transfer Select which pictures you would like to transfer to your computer.
 All on
 All off

Setup Menu

1 Press the MENU button. You can select the setup menu from either shooting mode or playback mode.



2 A choice of menus will be displayed in the monitor. Press ▼ to highlight SETUP then press ▶ to display the menu.



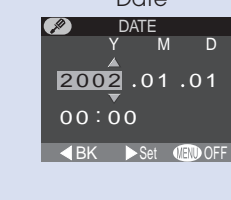
SETUP MENU There are 8 options in the setup menu.
 Brightness
 CF card format
 Date
 Auto off
 Video mode
 Language
 USB



Press ▼ or ▲ to adjust monitor brightness.



New memory cards must be formatted before they can be used. Formatting deletes all data including protected images.



Set the camera's internal clock to the current date and time.

Auto Off The camera turns off automatically when not being used to save battery power. Set the time interval for auto turn off.
 AUTO OFF
 3:00
 1:00
 3:00
 Off

Video Mode Select a standard for video output that matches the device connected to the camera.
 NTSC
 PAL
 Off

Language Select the language in which the camera menus and messages are displayed.
 English
 French
 Spanish
 Off

USB Select the protocol that matches your computer's operating system.
 PTP
 Mass Storage
 Off

▶ Viewing Pictures on Your Computer Using Windows

OS: Pre-installed versions of Windows XP Home Edition/Professional, Windows 2000 Professional, Windows Millennium Edition (Me), Windows 98 Second Edition (SE)

So that you can enjoy your Nikon digital camera to the full, Nikon offers the following software to help you sort, manipulate, print, and share your pictures on a computer:

- **Nikon View 5:** Use this program to copy pictures from the camera or memory card to your computer. Once transferred, you can view pictures at full size, print them, and organize them into folders on your hard disk.
- **FotoStation Easy:** The more adventurous can use this program for more comprehensive sorting, filing, and image manipulation. FotoStation is only available to users in Europe.
- **Panorama Maker:** This program allows you to join several pictures to make a larger image.
- **QuickTime:** Nikon View and FotoStation use this program to play back movies.

Depending on the version of Nikon View 5 installed, the installation process, dialogs and messages displayed may differ from those described here.

To Users of Windows XP Home Edition/Professional and Windows 2000 Professional

When installing, uninstalling, or using Nikon View 5, log on as the "Computer administrator" (Windows XP Home Edition/Professional) or "Administrator" (Windows 2000 Professional).

Before Connecting the Camera

Before connecting your camera to a computer, make sure that Nikon View 5 is installed.

Install Software

- Turn the computer on and wait for the operating system to start up.
- Insert the Nikon View 5 installer CD into a CD-ROM drive.
- The dialog shown at right will be displayed. Select a language from the pop-up menu and click **Next**.
- The Install Center program will be launched automatically. Click **Easy Install** to begin installation. Software installation includes Panorama Maker, QuickTime 5.0.2, Nikon View 5, and FotoStation Easy (FotoStation is only available to users in Europe).

Windows 98 Second Edition (SE)

If you are using Windows 98SE, be sure to install the Coolpix Camera Driver.

Coolpix Camera Driver (Windows 98SE Only)

Click **OK** to begin installation of the Coolpix Camera Driver, and click **OK** again once installation is complete.

Windows XP Update (Windows XP Only)

If you are using Windows XP, depending on the version of Nikon View, and on the computer's operating environment, the PTP driver installation and Setup wizard may start when you click **Easy Install**. Follow the on-screen instructions until the last dialog in the wizard is displayed, then continue with installation of the next application. **Do not restart your computer.**

e ArcSoft Panorama Maker 3.0

Installation opens with a dialog asking you to select the desired language. Select a language and click **OK**. The dialog shown at right will be displayed. Follow the on-screen instructions to complete installation.

f QuickTime 5.0.2

Installation opens with the dialog shown at right. The three fields "Registered To," "Organization," and "Registration Number" should be left blank. Click **Next**. Follow the on-screen instructions to complete installation.

g Nikon View 5

Installation of Nikon View 5 starts with the license agreement. Be sure you have read and understood the contents of the license agreement before clicking **Yes** to proceed to the next step.

h

The destination folder for Nikon View 5 will be displayed. Click **Next**.

i

Click **Yes** to create a new folder for Nikon View 5.

j

Click **Yes** to create a shortcut to Nikon View 5 on the desktop.

k

Click **Finish** to complete installation.

l FotoStation Easy

Installation opens with a dialog asking you to select the desired language. Select a language and click **OK**. The dialog shown at right will be displayed. Follow the on-screen instructions to continue installation. If a message is displayed stating that a newer version of QuickTime is already installed, click **OK**.

m

Click **Yes** to restart the computer.

n

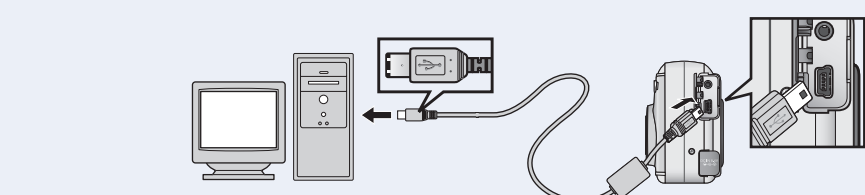
Once the computer has restarted, remove the Nikon View 5 installer CD from the CD-ROM drive.

If the Welcome program starts up again after you have restarted the computer, click **Quit** to exit the Welcome program and then remove the CD from the CD-ROM drive.

Copy Pictures to Your Computer

a

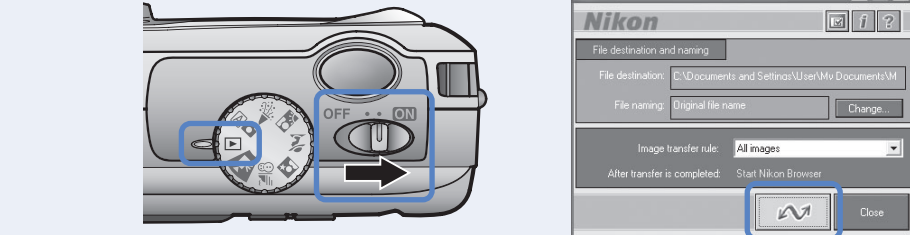
Connect the camera to your computer as shown in the illustration below, using the USB cable provided.



b

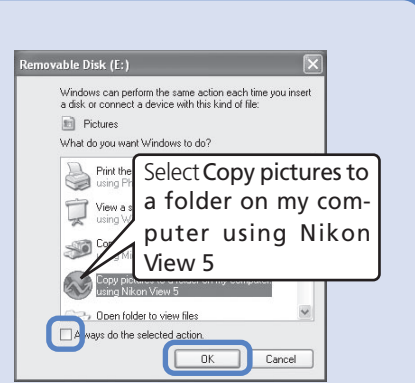
Turn the camera on (the monitor will be blank). Nikon View 5 will automatically detect the camera and display the Nikon Transfer window. Click the **Transfer** button.

For information on how to transfer pictures to the computer using the **Transfer** button on the camera, refer to the *Nikon Guide to Digital Photography*.



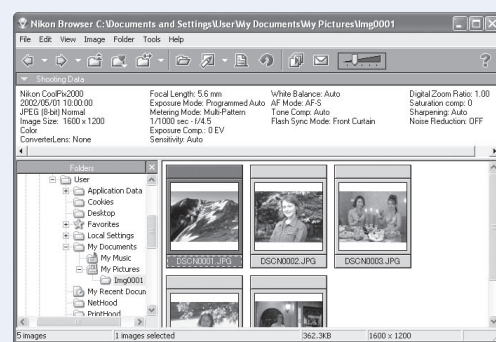
AutoPlay (Windows XP)

When you turn the camera on, a Removable Disk dialog will be displayed. Select **Copy pictures to a folder on my computer using Nikon View 5** and click **OK** to start Nikon View 5. If you plan to always mark images for transfer using the camera **button**, we recommend that you choose **Always do the selected action**.



c

When all pictures have been copied, the Nikon View 5 Nikon Browser window will be displayed in the computer monitor.



By default, pictures will be copied to the folder "Imgnnnn" in the My Documents folder or My Pictures folder, where *nnnn* is a four-digit number (starting from 0001) assigned automatically by Nikon View 5.

d

After confirming that transfer is complete, remove the camera from the system as described below.

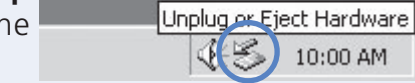
Windows XP Home Edition/Professional
Click the "Safely Remove Hardware" icon in the taskbar and select **Safely remove USB Mass Storage Device** from the menu that appears.



Windows 2000 Professional
Click the "Unplug or Eject Hardware" icon in the taskbar and select **Stop USB Mass Storage Device** from the menu that appears.



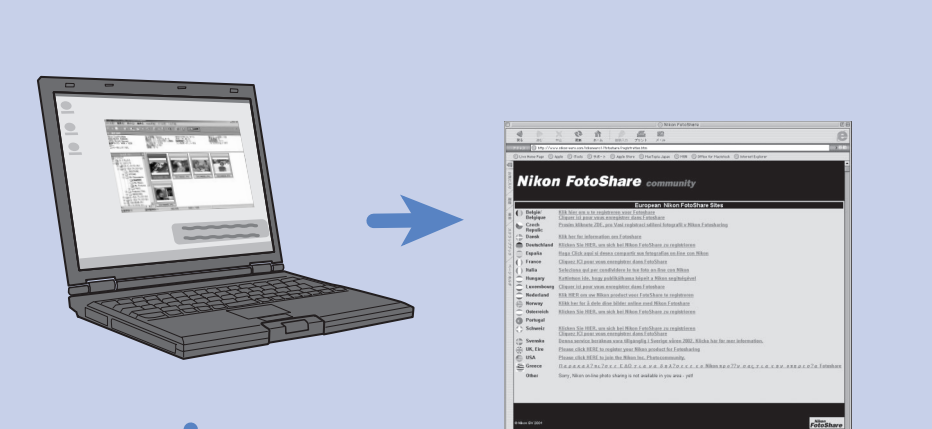
Windows Millennium Edition (Me)
Click the "Unplug or Eject Hardware" icon in the taskbar and select **Stop USB Disk** from the menu that appears.



Windows 98 Second Edition (SE)
In My Computer, click with the right mouse button on the removable disk corresponding to the camera and select **Eject** from the menu that appears.



Enjoying Pictures on Your Computer



Post pictures on your web site. Make an on-line photo album at <http://www.nikonfotoshare.com/>

European customers can share their pictures on-line in password-protected "photo albums." Once you have used the simple on-line tools to upload your pictures, you can send invitations to selected guests to view your album at their leisure. You can even order prints on-line.

Make prints on your personal color printer.

▶ Viewing Pictures on Your Computer Using a Macintosh

OS: Mac OS 9.0, Mac OS 9.1, Mac OS 9.2, Mac OS X (10.1.2 or later)

So that you can enjoy your Nikon digital camera to the full, Nikon offers the following software to help you sort, manipulate, print, and share your pictures on a computer:

- **Nikon View 5:** Use this program to copy pictures from the camera or memory card to your computer. Once transferred, you can view pictures at full size, print them, and organize them into folders on your hard disk.
- **FotoStation Easy:** The more adventurous can use this program for more comprehensive sorting, filing, and image manipulation. FotoStation is only available to users in Europe.
- **Panorama Maker:** This program allows you to join several pictures to make a larger image.
- **QuickTime:** Nikon View and FotoStation use this program to play back movies.

Depending on the version of Nikon View 5 installed, the installation process, dialogs and messages displayed may differ from those described here.

Before Connecting the Camera

Before connecting your camera to a computer, make sure that Nikon View 5 is installed.

Install Software

- Turn the computer on and wait for the operating system to start up. Insert the Nikon View 5 installer CD into a CD-ROM drive. The Nikon View Welcome program will be launched automatically. **Mac OS X (10.1.2 or later)** Nikon View 5 will not start automatically. Double-click the Nikon View 5 CD-ROM icon on the desktop, then double-click the Welcome icon.
- The dialog shown at right will be displayed. Select a language from the pop-up menu and click **Next**.
- The Install Center program will be launched automatically. Click **Install** to begin installation of all the software checked in the software tab. By default, the installation includes Panorama Maker, QuickTime 5.0.2, Nikon View 5, and FotoStation Easy (FotoStation is only available to users in Europe). QuickTime 5.0.2 is not installed under Mac OS X.
- Panorama Maker** The dialog shown at right will be displayed. Follow the on-screen instructions to complete installation.

Mac OS X (10.1.2 or later)

If you are using Mac OS X, the Authenticate dialog will be displayed before the Nikon View 5 installer. Enter your administrator name and password, and then click **OK**.

e Nikon View 5

The license agreement shown at right will be displayed. Be sure you have read and understood the agreement before clicking **Accept**. The ReadMe file will then be displayed. Take a few moments to read this file which may contain important information that could not be included in the manual.

f

Click **Install** to proceed with installation.

Add to Dock/Create an Alias

After you click Install, a dialog will be displayed where you can click **OK** to add Nikon View 5 to the Dock (Mac OS X) or create an alias to Nikon View 5 on the desktop (Mac OS 9).

g

Click **Quit** to complete installation of Nikon View 5.

h FotoStation Easy

The dialog shown at right will be displayed. Follow the on-screen instructions to complete installation.

i QuickTime 5.0.2

Installation of QuickTime 5.0.2 opens with a welcome dialog. Click **Continue** and follow the on-screen instructions to accept the license agreement. When the dialog shown at right is displayed, select **Recommended** and click **Continue**.

The Registration dialog will be displayed. No registration number is required; leave the registration information blank and click **Continue**. Follow the on-screen instructions to complete installation.

j

One of the two dialogs shown right will be displayed. Click **Restart** to restart your computer.

k

Once the computer has restarted, remove the Nikon View 5 installer CD from the CD-ROM drive. If the Welcome program starts up again after you have restarted the computer, click **Quit** to exit the Welcome program and then remove the CD from the CD-ROM drive.

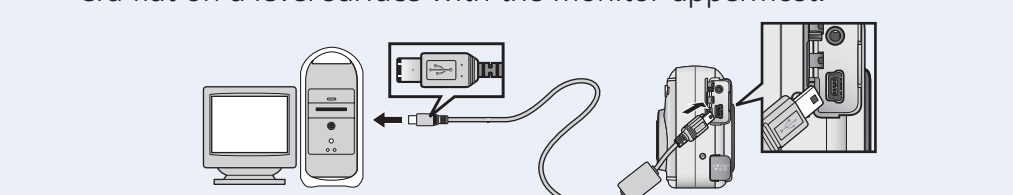
Copy Pictures to Your Computer

Mac OS X (10.1.2 or later)

Before turning the camera on, select **Applications** from the **Go** menu and double-click the **Image Capture** icon. The dialog shown at right will be displayed. Select **None** from the **Hot plug action** menu and close the Image Capture dialog. If you install Apple iPhoto software after you install Nikon View 5, please repeat this step to prevent both iPhoto and Nikon View 5 from starting when you connect your camera.

a

Connect the camera to your computer as shown in the illustration below, using the USB cable provided.

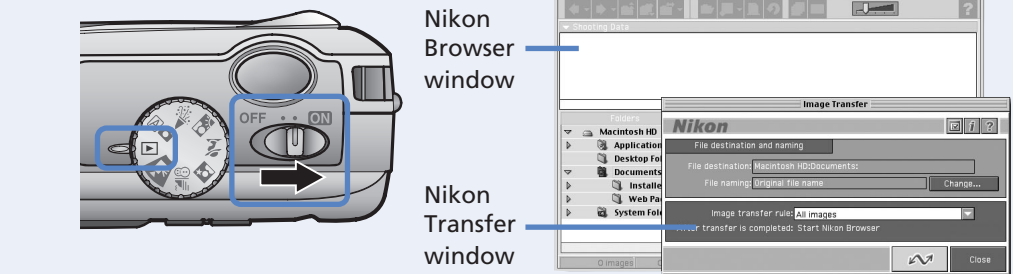


b

Turn the camera on (the monitor will be blank). Nikon View 5 will automatically detect the camera and display the Nikon Transfer window. Click the **Transfer** button.

For information on how to transfer pictures to the computer using the **Transfer** button on the camera, refer to the *Nikon Guide to Digital Photography*. The camera **button** can be used to transfer images in Mac OS X 10.1.3 or later.

On a Macintosh, Nikon Transfer will start up after Nikon Browser has started.



c

When all pictures have been copied, they will be displayed in the Nikon View 5 Nikon Browser window.

By default, pictures will be copied to the folder "Imgnnnn" in the Documents folder (Mac OS 9) or Pictures folder (Mac OS X), where *nnnn* is a four-digit number (starting from 0001) assigned automatically by Nikon View 5.

d

After confirming that transfer is complete, be sure to drag the untitled (in Mac OS X, "NO_NAME") disk corresponding to the camera into the Trash before turning the camera off and disconnecting the USB cable.

